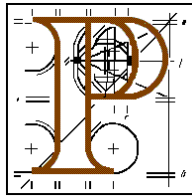


An Bord Pleanála



National Monuments Acts 1930 to 2004

Roads Acts 1993 and 1998

Planning and Development Acts, 2000 to 2006

Meath County Council

NOTIFICATION received by An Bord Pleanála on the 6th July, 2007 from the National Roads Authority of Ministerial Directions under section 14A(4)(d) of the National Monuments Act, 1930, as amended, in respect of a previously unrecorded archaeological site at Lismullin, County Meath on the route of the approved M3 Clonee to North of Kells Motorway Scheme.

DECISION: In accordance with its powers under section 14B of the National Monuments Act, 1930, as amended, and based on the reasons and considerations set out under, the Board hereby determines that no material alteration arises to the approved road development as a consequence of the Directions of the Minister.

Reasons and Considerations

Having regard to:-

- the alignment and design of the approved road development and to the modifications subject to which the road development was approved by the Board under sections 49 and 51 of the Roads Act, 1993,
- the directions issued by the Minister for the Environment, Heritage and Local Government to the National Roads Authority under section 14A 4(d) of the National Monuments Act, 1930 (as amended) to amongst other things fully excavate and record that part of the National Monument within the area to be compulsorily acquired,
- to the statement from the National Roads Authority to the effect that no change is necessitated to the approved road development arising from the Ministerial Directions issued in relation to the newly discovered national monument,

- the report of the person appointed by the Board to make a report and recommendation on the matter,

it is considered that as a consequence of the Minister's Directions no material alteration arises to the road development as approved under either section 49 or 51 of the Roads Act 1993.

**Member of An Bord Pleanála
duly authorised to authenticate
the seal of the Board.**

Dated this day of 2007.